

BM8G



- Stainless steel IP68 shear beam load cell
- Hermetically sealed
- Robust and wide mounting surface
- Suitable for harsh environment
- Current calibrated (sc-option)



test certificate no. D09-07.22
C of C no R60/2000-DE1-10.07

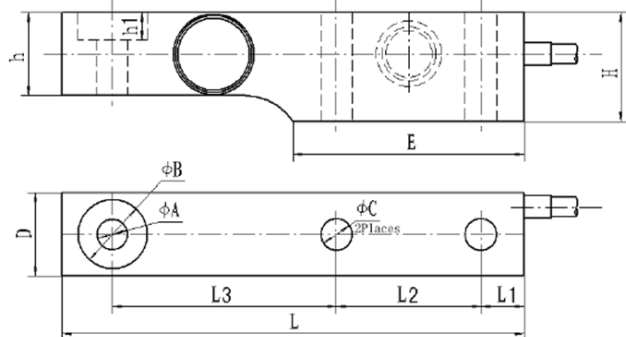
Available models

Capacity	Accuracy	Full article description
500kg	C3/C4	BM8G-C3/C4-500kg-5B-SC
1t	C3/C4	BM8G-C3/C4-1t-5B-SC
2t	C3/C4	BM8G-C3/C4-2t-5B-SC
5t	C3	BM8G-C3-5t-5B-SC
7.5t	C3	BM8G-C3-7.5t-5B-SC-W2
10t	C3	BM8G-C3-10t-5B-SC

Specification

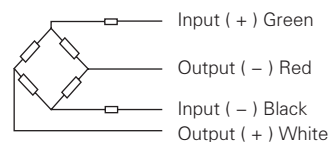
Accuracy class		OIML R60 C3	OIML R60 C4
Output sensitivity (= FS)	mV/V	2.0 ± 0.002	
Maximum capacity (E _{max})	t	0.5, 1, 2, 5, 7.5, 10	0.5, 1, 2
Maximum number of load cell intervals (nLC)		3000	4000
Ratio of minimum LC verification interval Y = E _{max} / v _{min}		10000	15000
Combined error	%FS	± 0.0230	± 0.0175
Minimum dead load	of E _{max}	0 %	
Safe overload	of E _{max}	150 %	
Ultimate overload	of E _{max}	300 %	
Zero balance	%FS	± 1.0	
Excitation, recommended voltage	V	5 ~ 15(DC)	
Excitation maximum	V	18(DC)	
Input resistance	Ω	350 ± 3.5	
Output resistance	Ω	350 ± 3.5	
Insulation resistance	MΩ	≥ 5000 (50VDC)	
Compensated temperature	°C	-10 ~ +40	
Operating temperature	°C	-35 ~ +65	
Storage temperature	°C	-40 ~ +70	
Element material		Stainless steel	
Recommended torque on fixation	N.m	M12: 100	M20:450 M24:750
Ingress protection (according to EN 60529)		IP68	

Dimensions in mm



Capacity	Dimension A	B	C	D	E	L	L1	L2	L3	H	h	h1
0.5t-2t (1k1b-5k1b)	17.48 (0.69)	30.3 (1.19)	13.9 (0.55)	36.5 (1.44)	101.6 (4.00)	203.2 (8.00)	19.05 (0.75)	63.5 (2.50)	98.43 (3.88)	47.63 (1.88)	36.5 (1.44)	11.8 (0.46)
1t,2t,2klb,5klb	/	/	/	/	/	/	/	/	/	/	/	11.9 (0.47)
5t,7.5t-W2 (10K1b-15K1b)	25.5 (1.00)	41.4 (1.63)	22.23 (0.88)	47.36 (1.86)	117.5 (4.63)	234.95 (9.25)	20.62 (0.81)	66.7 (2.63)	123.8 (4.87)	69.85 (2.75)	47.64 (1.88)	15.75 (0.62)
5t-W1	25.5 (1.00)	41.3 (1.63)	22 (0.87)	47.5 (1.87)	111 (4.37)	234.95 (9.25)	20.62 (0.81)	66.7 (2.63)	123.8 (4.87)	50 (1.97)	47.6 (1.87)	15.8 (0.62)
5t-W2	25.5 (1.00)	41.4 (1.63)	22.23 (0.88)	47.37 (1.86)	117.5 (4.63)	234.95 (9.25)	20.62 (0.81)	66.7 (2.63)	123.8 (4.87)	69.85 (2.75)	47.6 (1.87)	15.75 (0.62)
10t	25.5 (1.00)	41.4 (1.63)	25 (0.98)	55 (2.17)	111 (4.37)	234.95 (9.25)	20.62 (0.81)	66.7 (2.63)	123.8 (4.87)	69.85 (2.75)	58.6 (2.31)	15.75 (0.62)

Wiring



- Shielded, 4 conductor cable.
- Cable diameter: Φ5mm
- Standard cable length: 5m
- Shield not connected to element.