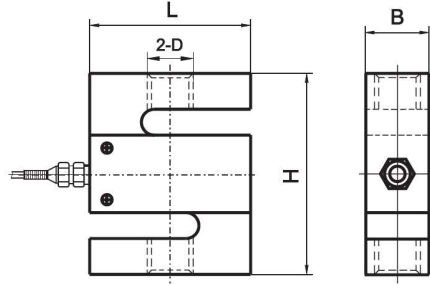
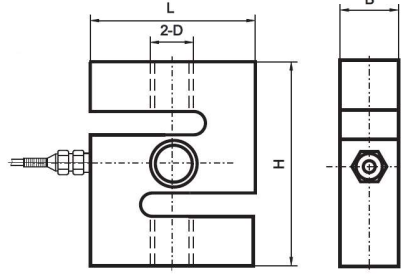
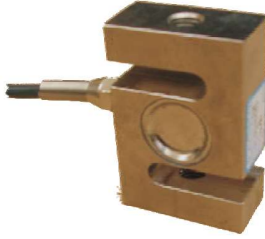


A3H



20~300KG



500KG~30t

Capacity	L	H	B	D
20kg~30kg	51	64	12.7	M8X1.25
50kg~750kg	50.8	76.2	19.05	M12X1.75
1t	50.8	76.2	25.4	M12X1.75
1.5t	50.8	76.2	25.4	M16X1.5
2t~3t	76.2	108	31.8	M20X1.5
5t	76.2	108	36.98	M24X2
7.5t	100	139.7	36.98	M24X2
10t	125.5	177.8	50.8	M30X2
20t	140	170	81	M42X3
30t	190	230	80	M42X3

Technical Specifications

Application		Crane scale	
Model		A3H	
Capacity	t	(As above)	
Rated output	MV/V	2.0±0.004	3.0±0.004
Accuracy class		C2	C3
Maximum number of verification intervals	n_{max}	2000	3000
Minimum load cell verification intervals	V_{min}	$E_{Max}/5000$	$E_{Max}/7500$
Combined error	%RO	≤ ±0.030	≤ ±0.020
Creep	%RO/30min	0.02	
Temperature effect on sensitivity	%RO/°C	0.003	0.0016
Temperature effect on zero	%RO/°C	0.005	0.002
Zero balance	%RO	±1.0	
Input resistance	Ω	365±5	
Output resistance	Ω	350±3	
Insulation resistance	M Ω (50V)	5000	
Recommended excitation voltage	V	10~15	
Compensated temperature range	°C	-10~+40	
Operating temperature range	°C	-35~+80	
Safe overload	%RO	150	
Ultimate overload	%RO	200	
Load cell material		Alloy steel	Stainless steel(IP68)
Connecting cable		20kg~2t \varnothing 5.7X3.5m	2.5t~30t \varnothing 5.7X6m
Method of connecting wire		Kırmızı Giriş (+) Siyah Giriş (-) Yeşil Çıkış (+) Beyaz Çıkış (-)	