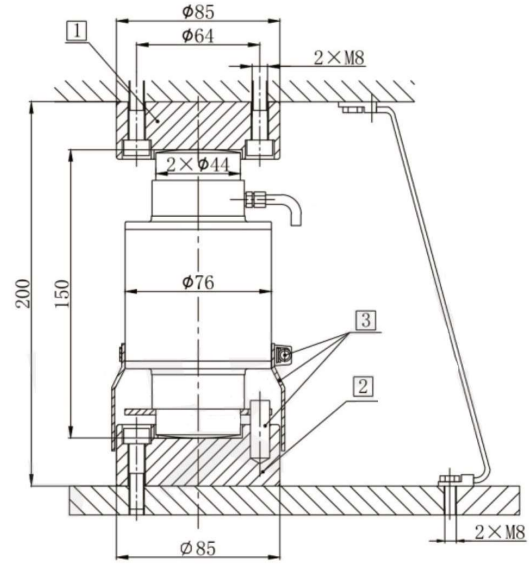


IN-ZS

Column Load cell

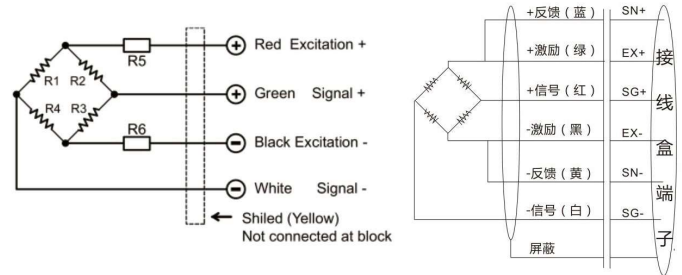


- 1 CTA/ZOU B1
- 2 CTA/ZOU2 B2
- 3 Dowel pin 10X30(rotation stop)
flexible tube and tube clip enclosed
in the packing of the load cell



IN-ZS Applied to truck scales, railway scales, axle scales, ground scales

Circuit Diagram



Specification

Rated load (Emax)	10,20,30,40,50t	Insulation resistance	≥ 5000MΩ
Sensitivity	2.0±0.1% mV/V	Operating Temp Range	(-20~+70)°C
Combined error	±0.015 % F.S	Safe load limit	150%F.S
Creep/30min	±0.02 % F.S/30min	Ultimate overload	200%F.S
Zero balance	±1.0% F.S	Recommend excitation	5~15V(DC or AC)
TCO	±0.02 % F.S/10°C	Maximun excitatong	15V (DC or AC)
TC SPAN	±0.02 % F.S/10°C	Protection Class	Ip68
Input resistance	700±10Ω/775±10Ω	Material	Alloy steel Stainless steel
Output resistance	702±2Ω	Cable Length=L:8m(10t),10m(15t),12m(20,25t),16m(30t),18m(40t)	Diameter: Φ6mm