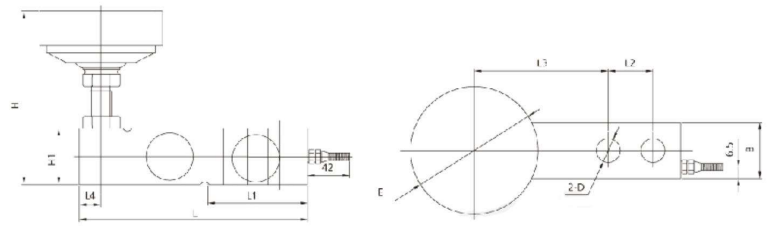


# HSQB

## Weighing Load cell

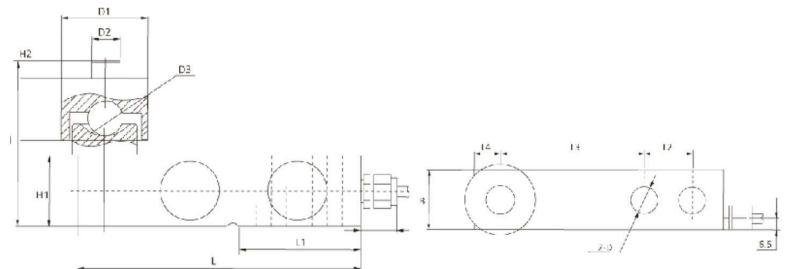


0.5~10t

### Main Dimensions

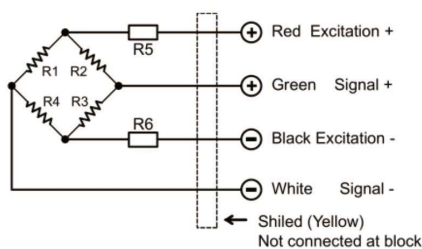
Rated load (t)	L	L1	L2	L3	L4	B	H	H1	H2	D	E
0.25~2.5	130	53.5	25.4	76.2	12.7	31.8	85-90	31.8	4	Φ13	Φ62
3~5	171.5	72.5	38.1	95.3	19	38.1	104-114	38.1	6	Φ20	Φ62
7.5~10	225.5	102	50.8	124	25.3	50.8	132-144	50.8	8	Φ27	Φ80

HSQB01 Applied to Electronic platform scale, Ground weighter, single-track scales, hopper weighing.



0.5~10t钢球压头结构

### Circuit Diagram



### 主要外形尺寸Main Dimensions

额定载荷 (t) Rated load	L	L1	L2	L3	L4	B	H	H1	H2	H3	D	D1	D2	D3
0.25~2.5	130	53.5	25.4	76.2	12.7	31.8	77.8	31.8	12	4	Φ13	Φ38	Φ12	S Φ16
3~5	171.5	72.5	38.1	95.3	19	38.1	94.1	38.1	10	6	Φ20	Φ50	Φ16	S Φ20
7.5~10	225.5	102	50.8	124	25.3	50.8	130	50.8	10	8	Φ27	Φ64	Φ20	S Φ32

### Specification

Rated load (Emax)	0.25~2.5t , 3~5t, 7.5~10t	Insulation resistance	≥5000MΩ
Sensitivity	3.0±0.006mV/V	Operating Temp Range	(-30~+70)°C
Combined error	±0.02%F.S, ±0.03 %F.S	Safe load limit	150%F.S
Creep/30min	±0.02%F.S/30min	Ultimate overload	180%F.S
Zero balance	±1%F.S	Recommend excitation	10~12V DC
TCO	±0.02% F.S/10°C	Max excitation	15V DC
TC SPAN	±0.02%F.S/10°C	Protection Class	Ip67(0.25~0.75t);IP68(1~10t)
Input resistance	400±20Ω	Material	Alloy steel Stainless steel
Output resistance	352±3Ω	Cable	Length:5m Diameter: Φ5mm