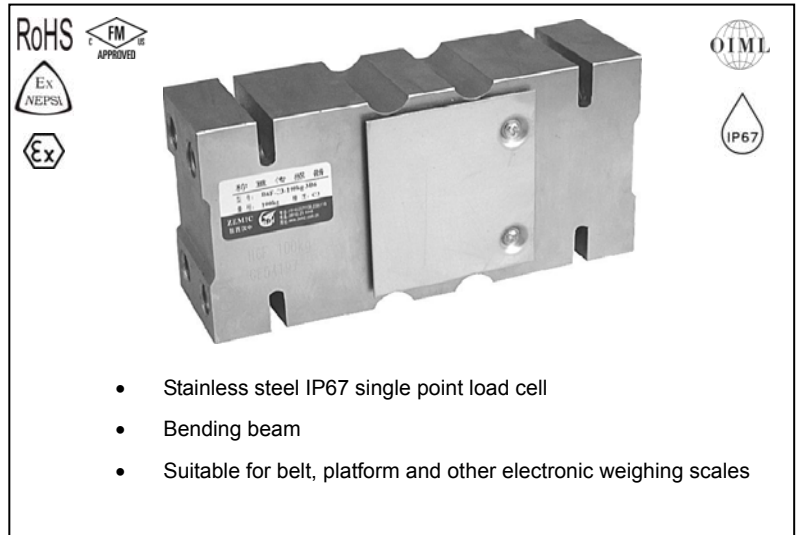


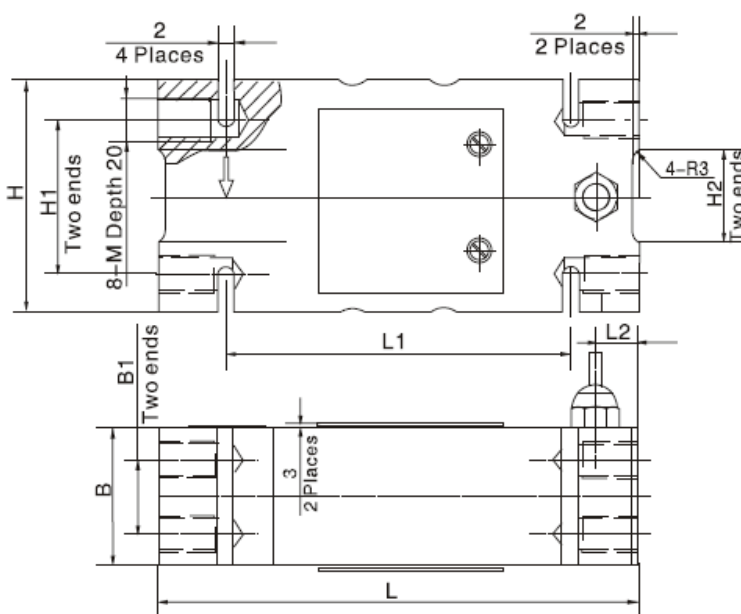
Capacity	Accuracy	Part-Number
100 kg	C3 not approved	B6F-C3-100kg-3B6
150 kg	C3 not approved	B6F-C3-150kg-3B6
200 kg	C3 not approved	B6F-C3-200kg-3B6
250 kg	C3 not approved	B6F-C3-250kg-3B6
500 kg	C3	B6F-C3-500kg-3B6
750 kg	C3	B6F-C3-750kg-3B6
1000 kg	C3	B6F-C3-1000kg-3B6
2000 kg	C3	B6F-C3-2000kg-3B6



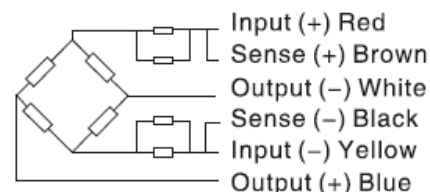
Specification:

Accuracy class		C3 not approved		OIML R60 C3	
Output sensitivity (= FS)	mV/V	2.0 ± 0.2			
Maximum capacity (E _{max})	kg	100, 150, 200	250	500	750, 1000, 2000
Maximum number of load cell intervals (n _{LC})		3000			
Ratio of minimum LC verification interval Y = E _{max} / V _{min}		5000		12000	
Combined Error	%FS	≤ ± 0.023			
Safe overload	of E _{max}	150 %			
Ultimate overload	of E _{max}	300 %			
Zero balance	of FS	< ± 1.0 %			
Excitation, recommended voltage	V	5 ~ 12			
Excitation maximum	V	18			
Terminal resistance, input	Ω	385 ± 5			
Terminal resistance, output	Ω	350 ± 3			
Maximum Platform size	mm	400x400	600x800	1200x1200	
Insulation impedance	MΩ	≥ 5000 (at 50VDC)			
Temperature range, compensated	°C	-10 ~ +40			
Temperature range, operating	°C	-35 ~ +65			
Element material		Stainless steel			
Ingress Protection (according to EN 60529)		IP67			
Recommended torque on fixation bolts	Nm	M12: 100	M12: 100	M16: 160	
ATEX classification (optional)		II1G Ex ia II1C T4	II1D Ex iaD 20 T73°C	II3G nL IIC T4	

Outline Dimensions in mm (inch)



Capacity Dimension	50kg ~ 200kg	250kg ~ 500kg	750kg ~ 2t
B	44(1.73)	60(2.36)	76(2.99)
B1	24(0.94)	36(1.42)	46(1.81)
H	75(2.95)	95(3.74)	125(4.92)
H1	50(1.97)	70(2.76)	95(3.74)
H2	30(1.18)	30(1.18)	65(2.56)
L	156(6.14)	146(5.75)	176(6.93)
L1	112(4.4)	110(4.33)	110(4.33)
L2	14(0.55)	11(0.43)	24(0.94)
M	M12-7H	M12-7H	M16-7H



Wiring:

Shielded, 6 conductor cable: Φ6.2mm
 Standard cable length: 3m
 Shield not connected to element